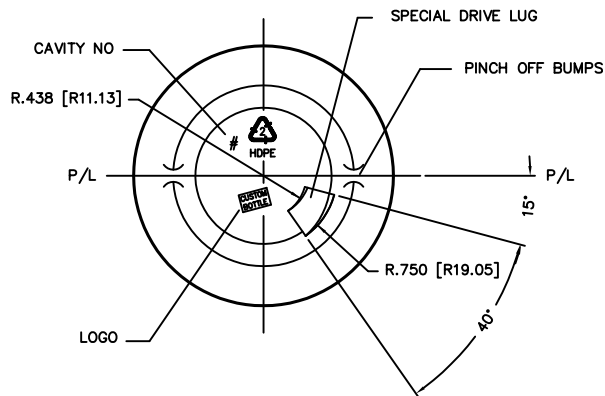
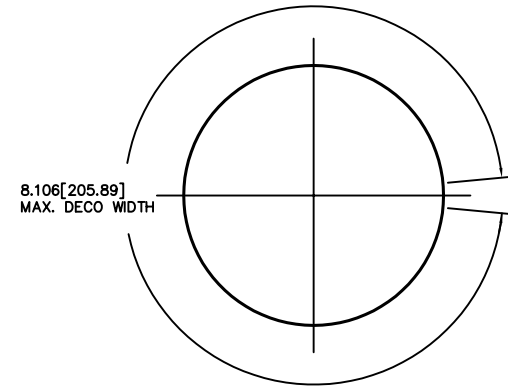
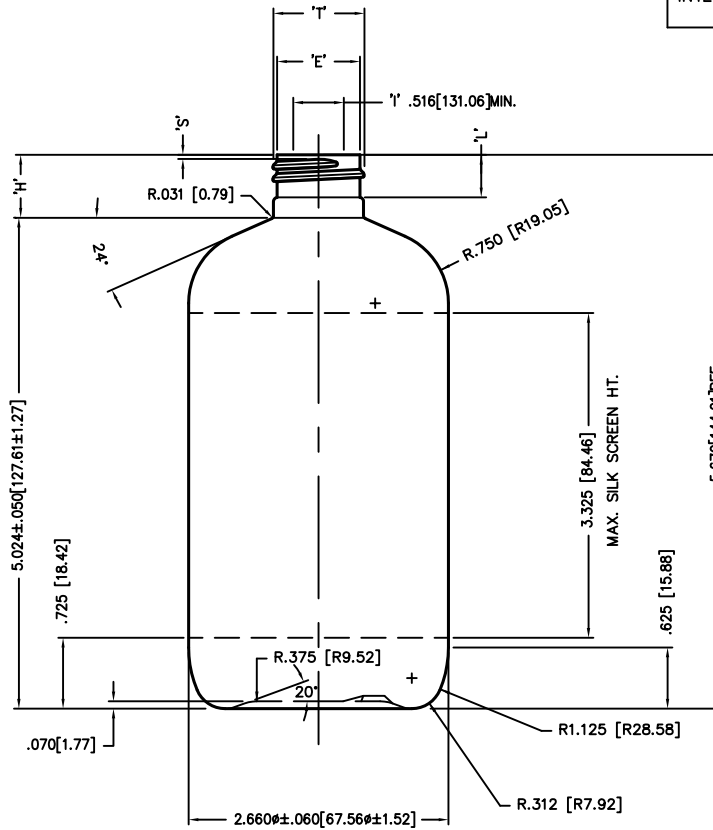


DISCLAIMER: CUSTOM BOTTLE INC.
ASSUMES NO RESPONSIBILITY FOR:
-FORM, FIT AND FUNCTION OF CLOSURES
-SHELF LIFE AND/OR COMPATIBILITY OF
INTENDED CONTENTS WITH THIS BOTTLE.

"T" AND "E" DIMENSIONS ARE THE
AVERAGE OF TWO MEASUREMENTS
TAKEN 90° APART.
THE LIMITS OF QUALITY WILL BE
DETERMINED PER APPLICATION AS
NECESSARY.

DIMENSIONS IN [] ARE
IN MILLIMETERS
ALL OTHERS INDICATED
ARE IN INCHES
This drawing subject to
standard industry tolerances
S.P.I.

CUSTOM BOTTLE
APPROVAL:
APPROVED BY **BP**
DATE **MAY 18/11**
CUSTOMER
APPROVAL:
APPROVED BY
DATE



SCREEN PRINTING AREA

MAXIMUM HEIGHT: 3.325 [84.46]
MAXIMUM WIDTH: 8.106 [205.89]
(LEAVING 1/4 [212.24] BREAK IN COPY)

NO.	REV.	BY	DESCRIPTION	DATE	
NECK FINISH: M24 SP410			GRAM WT. 29g +1.5/-5		
'T'	'E'	'H'	'S'	'L'	'I'
.932 ± .008	.848 ± .008	.646 ± .015	.046 ± .015	.437 MIN.	———
23.67 ± 0.20	21.54 ± 0.20	16.41 ± 0.38	1.17 ± 0.38	11.10 MIN.	———
HELIX <: 2° 34'		T.P.I.: 8	CUTT. DIA.: .375 [9.53]		
OVERFLOW CAPACITY BEFORE DECORATING				402ml ± 11	
			Custom Bottle Inc. 10 Great Hill Road P.O. Box 720 Naugatuck, Connecticut 06770 203-723-6661		
			DRAWN BY: 1130		
SCALE: 1-1		DATE: JAN.23/06		DRAWING NO.: 107-7198-STOCK	
BOTTLE MAT'L: HDPE			MOULD NO.:		
C.B.I.D.: #275					