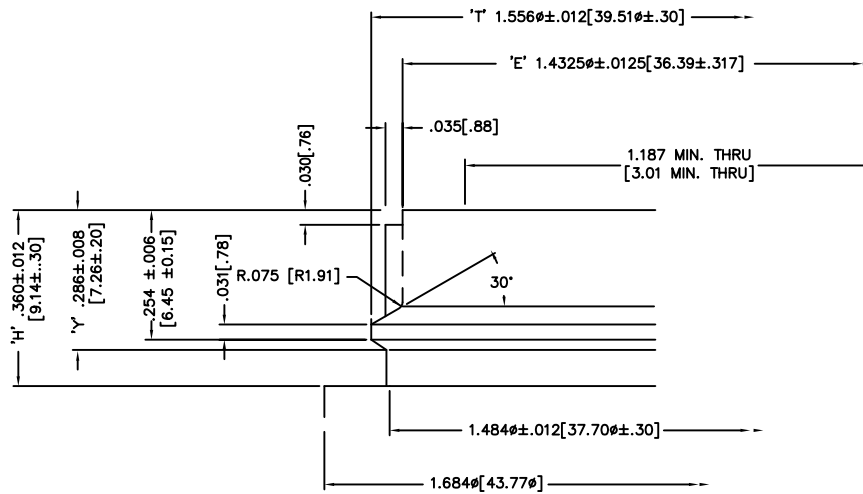
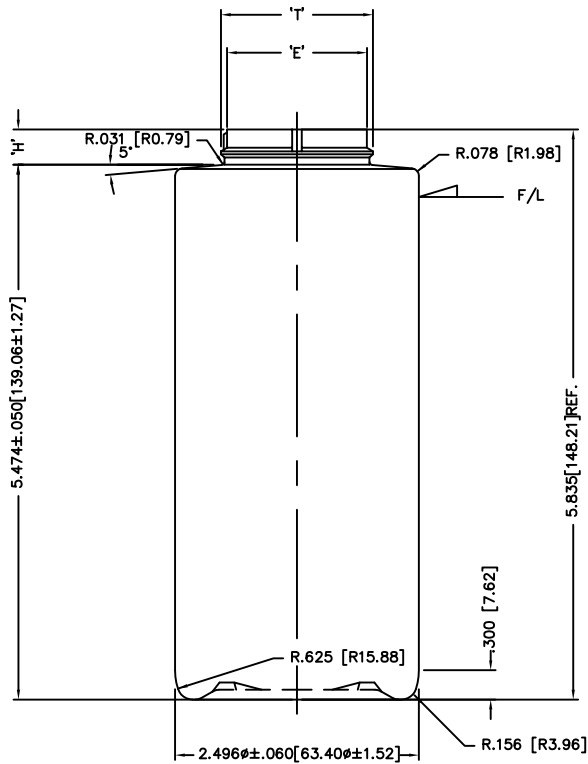


DISCLAIMER: CUSTOM BOTTLE INC.  
ASSUMES NO RESPONSIBILITY FOR:  
-FORM, FIT AND FUNCTION OF CLOSURES  
-SHELF LIFE AND/OR COMPATIBILITY OF  
INTENDED CONTENTS WITH THIS BOTTLE.

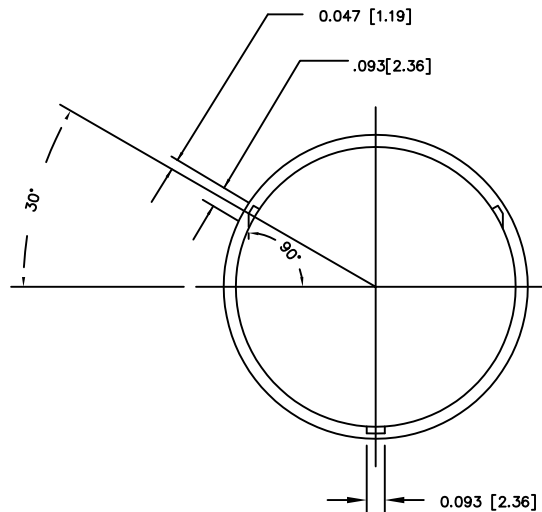
'T' AND 'E' DIMENSIONS ARE THE  
AVERAGE OF TWO MEASUREMENTS  
TAKEN 90° APART.  
THE LIMITS OF QUALITY WILL BE  
DETERMINED PER APPLICATION AS  
NECESSARY.

DIMENSIONS IN [ ] ARE  
IN MILLIMETERS  
ALL OTHERS INDICATED  
ARE IN INCHES  
This drawing subject to  
standard industry tolerances  
S.P.I.

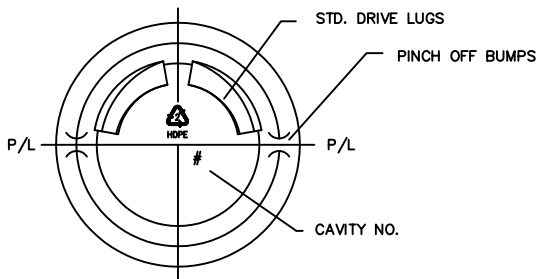
CUSTOM BOTTLE  
APPROVAL:  
APPROVED BY **BP**  
DATE **NOV. 15/10**  
CUSTOMER  
APPROVAL:  
APPROVED BY .....  
DATE .....



SNAP BEAD DETAIL  
SCALE: 5-1



SCALE: 2-1



NOTE: CLOSURE REQUIRED: 43P702 SIFTER CAP

NOTE: MINIMUM WALL THICKNESS .020 [.51] AT MIDPOINT.


NO.	REV.	BY	DESCRIPTION	DATE	
NECK FINISH: 43mm POWDER NECK			GRAM WT. 29 ±2		
'T'	'E'	'H'	'S'	'L'	'I'
1.556±.012	1.4325±.0125	.350 ±.012	—	.254 ±.006	1.187 MIN.THUR
39.52±.30	36.39±.317	8.89 ±0.30	—	6.45 ±.15	3.01 MIN.THUR
HELIX <		T.P.I.:	CUTT. DIA.:		
OVERFLOW CAPACITY BEFORE DECORATING				18ml ±1	



Custom Bottle Inc.  
10 Great Hill Road  
P.O. Box 720  
Naugatuck, Connecticut 06770  
203-723-6661

DRAWN BY: ds	DESC.:	12oz W/M CYLINDER
SCALE: 1-1	DATE: APR.11/03	
BOTTLE MAT'L: HDPE	DRAWING NO.:	107-5565-STOCK
C.B.I.D.: #291	MOULD NO.:	