

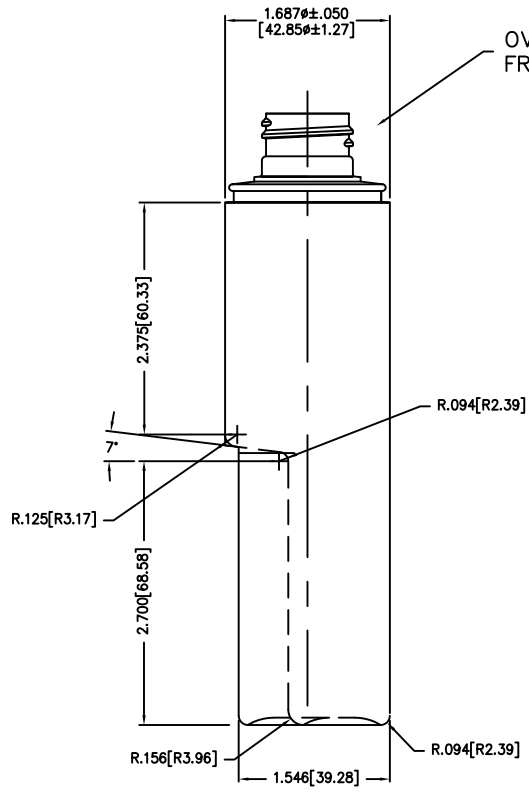
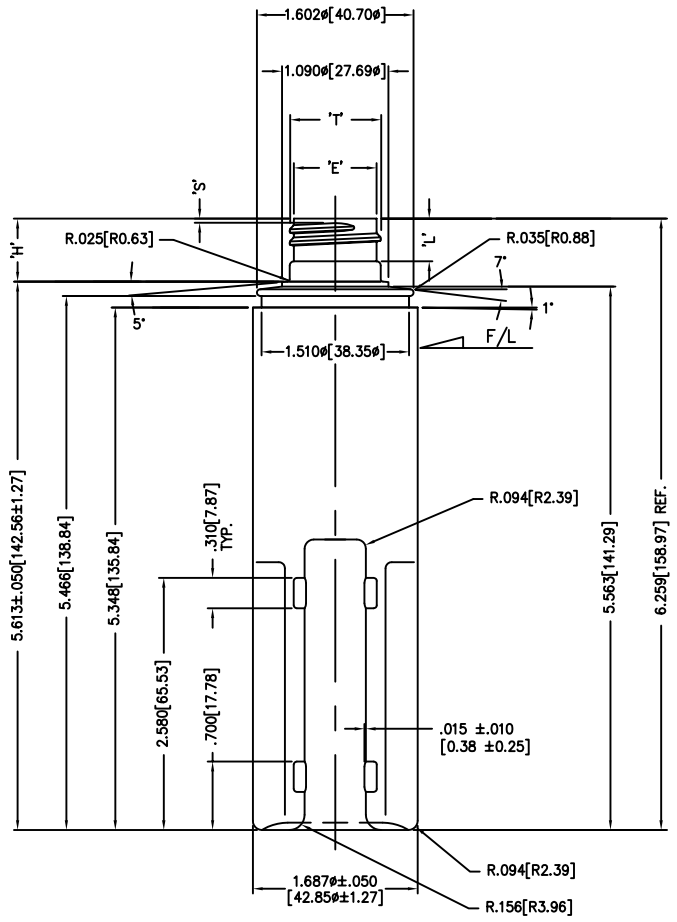
DISCLAIMER: CUSTOM BOTTLE INC. ASSUMES NO RESPONSIBILITY FOR:  
 -FORM, FIT AND FUNCTION OF CLOSURES  
 -SHELF LIFE AND/OR COMPATIBILITY OF INTENDED CONTENTS WITH THIS BOTTLE.

'T' AND 'E' DIMENSIONS ARE THE AVERAGE OF TWO MEASUREMENTS TAKEN 90° APART.  
 THE LIMITS OF QUALITY WILL BE DETERMINED PER APPLICATION AS NECESSARY.

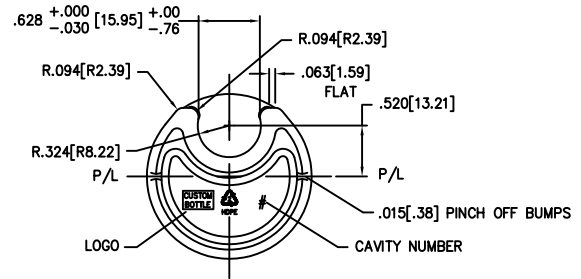
DIMENSIONS [ ] ARE IN MILLIMETERS ALL OTHERS INDICATED ARE IN INCHES  
 This drawing subject to standard industry tolerances S.P.I.

CUSTOM BOTTLE APPROVAL:  
 APPROVED BY **BP**  
 DATE **NOV. 23/10**

CUSTOMER APPROVAL:  
 APPROVED BY .....  
 DATE .....



OVER CAP AVAILABLE FROM CUSTOM BOTTLE INC.




NO.	REV.	BY	DESCRIPTION	DATE
NECK FINISH: M24 SP410			GRAM WT. 16±1	
'T'	'E'	'H'	'S'	'L'
.932 ±.008	.848 ±.008	.646 ±.015	.046 ±.015	.437 MIN.
23.67 ±0.20	21.54 ±0.20	16.41 ±0.38	1.17 ±0.38	11.10 MIN.
HELIX <: 2' 34'		T.P.I.: 8	CUTT. DIA.: .375	
OVERFLOW CAPACITY BEFORE DECORATING				173±6 ml.



Custom Bottle Inc.  
 10 Great Hill Road  
 P.O. Box 720  
 Naugatuck, Connecticut 06770  
 203-723-6661

DRAWN BY: 1130	DESC.: 150ml CHAP-STICK CYL.
SCALE: 1-1	DATE: OCT 27/97
BOTTLE MAT'L: HDPE	DRAWING NO.: 107-3397-STOCK
C.B.I.D.: #217	MOULD NO.: