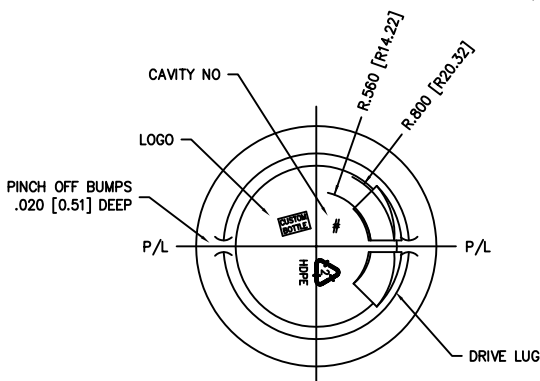
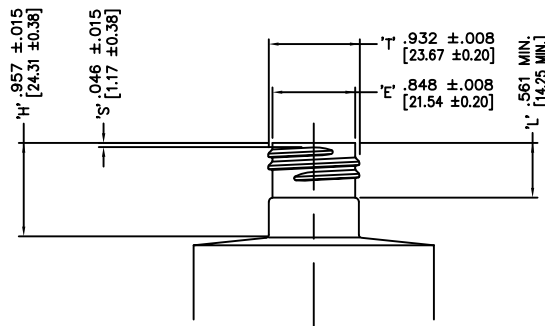
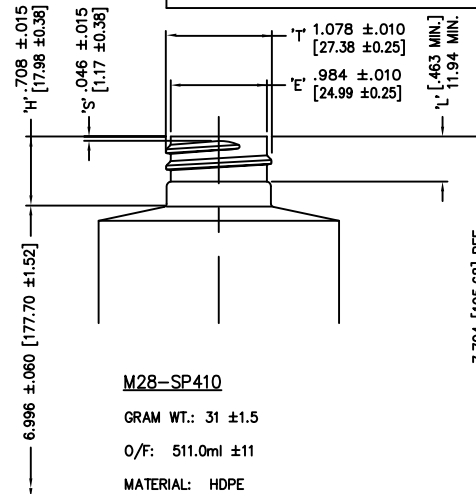
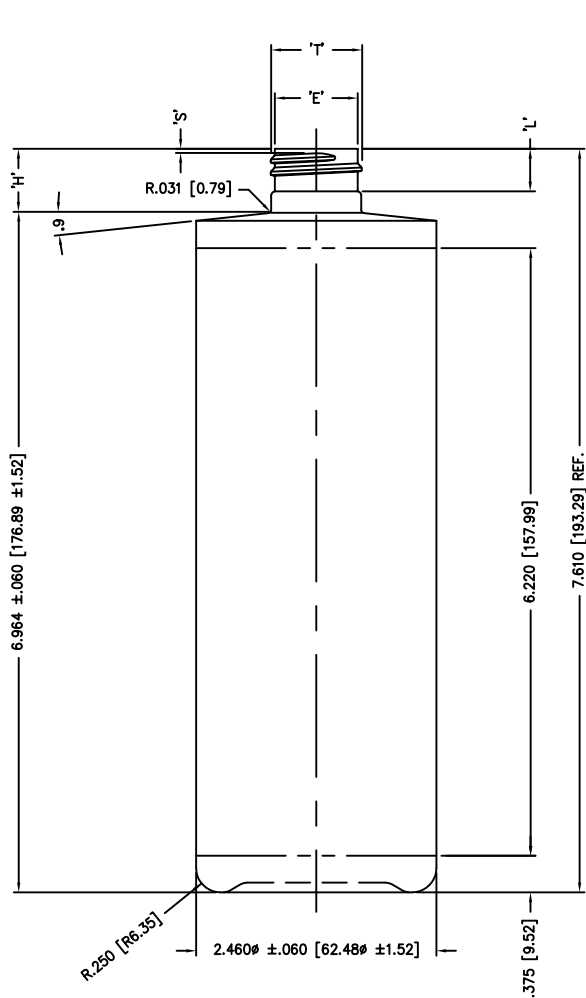


DISCLAIMER: CUSTOM BOTTLE INC.  
ASSUMES NO RESPONSIBILITY FOR:  
-FORM, FIT AND FUNCTION OF CLOSURES  
-SHELF LIFE AND/OR COMPATIBILITY OF  
INTENDED CONTENTS WITH THIS BOTTLE.

"T" AND "E" DIMENSIONS ARE THE  
AVERAGE OF TWO MEASUREMENTS  
TAKEN 90° APART.  
THE LIMITS OF QUALITY WILL BE  
DETERMINED PER APPLICATION AS  
NECESSARY.

DIMENSIONS IN [ ] ARE  
IN MILLIMETERS  
ALL OTHERS INDICATED  
ARE IN INCHES  
This drawing subject to  
standard industry tolerances  
S.P.I.

CUSTOM BOTTLE  
APPROVAL:  
APPROVED BY **BP**  
DATE **NOV. 23/10**  
CUSTOMER  
APPROVAL:  
APPROVED BY .....  
DATE .....



**SCREEN PRINTING INFORMATION**  
BOTTLE CIRCUMFERENCE: 7.570 [192.28]  
MUST ALLOW 5/16" BREAK  
TOTAL WIDTH OF COPY : 7.255 [184.28]  
TOTAL HEIGHT: 6.220 [157.99]

NO.	REV.	BY	DESCRIPTION	DATE	
NECK FINISH:			M24 SP410	GRAM WT. 31 ±1.5	
'T'	'E'	'H'	'S'	'L'	'I'
.932 ±.008	.848 ±.008	.646 ±.015	.046 ±.015	.437 MIN.	
23.67 ±0.20	21.54 ±0.20	16.41 ±0.38	1.17 ±0.38	11.10 MIN.	
HELIX <: 2' 34'		T.P.I.: 8	CUTT. DIA.: .375[9.53]		
OVERFLOW CAPACITY BEFORE DECORATING				510ml ±11	
			Custom Bottle Inc. 10 Great Hill Road P.O. Box 720 Naugatuck, Connecticut 06770 203-723-6661		
			DRAWN BY: 1130		
SCALE: 1-1		DATE: MAR.13/03		DRAWING NO.: 107-5521-STOCK	
BOTTLE MAT'L: HDPE			C.B.I.D.: #371		
			MOULD NO.:		