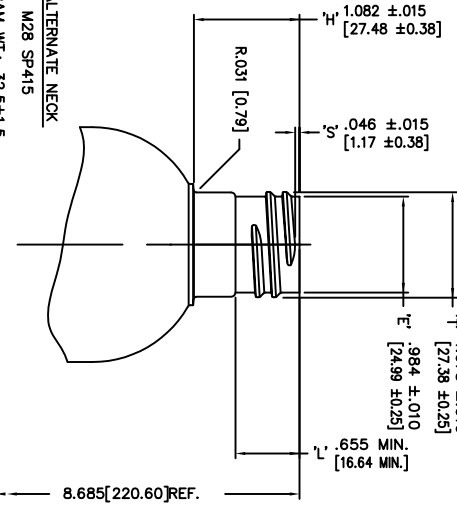


ALTERNATE NECK  
M28 SP415  
GRAM WT.: 32.5±1.5  
O/F/C: 511.5mm±11



This drawing subject to standard industry tolerances S.P.A.

CUSTOM BOTTLE APPROVAL: **APPROVED**  
NECK FINISH: .....  
WEIGHT: .....  
CAPACITY: .....  
MATERIAL: .....  
SPECIAL REQUESTS: .....  
CUSTOMER APPROVAL: .....  
APPROVED BY: .....  
DATE: .....

| NO. REV. BY   | DESCRIPTION | GRAM WT.     | DATE            |             |             |
|---|-------------|--------------|-----------------|-------------|-------------|
| NECK FINISH:  | M24 SP410   | 31.5±1.5     |                 |             |             |
| T   | E           | H            | S               | L           | P           |
| .932 ±.008  | .848 ±.008  | 646 ±.015    | .046 ±.015      | .516 MIN.   |             |
| 23.67 ±0.20   | 21.54 ±0.20 | 16.41 ±0.38  | 1.17 ±0.38      | 13.10 MIN.  |             |
| HELIX <:  | 2° 34'      | T.P.I.:      | 8               | CUTT. DIA.: | .375 [9.53] |
| CAPACITY TO FILL LEVEL BEFORE DECORATING  |             |              |                 |             | 473ml±11    |
| CAPACITY TO FILL LEVEL AFTER DECORATING   |             |              |                 |             |             |
| OVERFLOW CAPACITY BEFORE DECORATING   |             |              |                 |             | 509.5ml±11  |
| OVERFLOW CAPACITY AFTER DECORATING  |             |              |                 |             |             |
| <p>Custom Bottle Inc.<br/>10 Great Hill Road<br/>P.O. Box 720<br/>Naugatuck, Connecticut 06770<br/>203-723-6681</p> |             |              |                 |             |             |
| DRAWN BY:   | 002         | DESC.:       | 16oz TALL COSMO |             |             |
| SCALE:  | 1-1         | DATE:        | NOV.20/06       |             |             |
| BOTTLE MAT'L:   | HDPE        | DRAWING NO.: | 107-7561-P      |             |             |
| CAD NAME:   | POV         | C.B.I.D.:    | #54             |             |             |