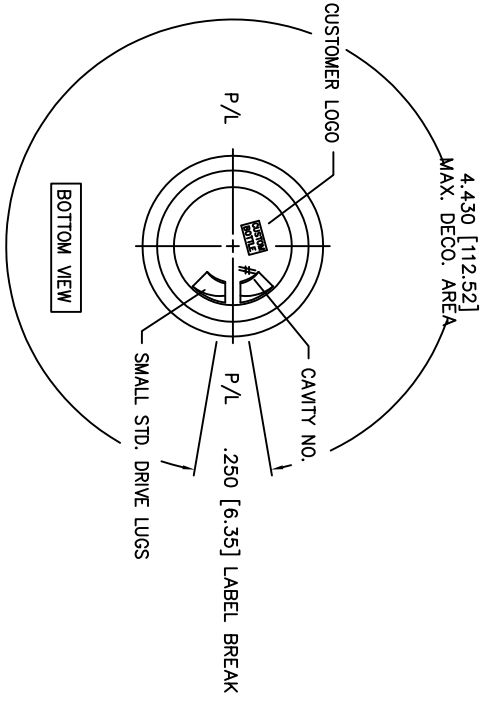


(A1)
M20-SP415

T: .775 ±.008 [19.69 ±0.20]
 E: .691 ±.008 [17.55 ±0.20]
 H: .742 ±.015 [18.85 ±0.38]
 S: .037 ±.015 [0.94 ±0.38]
 L: .456 MIN. [11.58 MIN.]
 HELIX <: 3° 7'
 T.P.I.: 8
 CUTT. DIA.: .375 [9.53]

CUSTOM BOTTLE
 APPROVAL: **APPROVED**
 NECK FINISH: **APPROVED**
 WEIGHT: **APPROVED**
 CAPACITY: **APPROVED**
 MATERIAL: **APPROVED**
 SPECIAL REQUESTS: **APPROVED**
 CUSTOMER APPROVAL: _____
 APPROVED BY: _____
 DATE: _____



This drawing subject to standard industry tolerances S.P.I.

NO. REV. BY		DESCRIPTION		DATE	
NECK FINISH: M20-SP410		GRAM WT. 9 ±1.5			
T	E	H	S	L	P
.775 ±.008	.691 ±.008	.554 ±.015	.037 ±.015	.445 MIN	
19.69 ±.20	17.55 ±.20	14.07 ±.38	0.94 ±.38	11.30 MIN	
HELIX <: 3° 7'		T.P.I.: 8		CUTT. DIA.: .375	
CAPACITY TO FILL LEVEL BEFORE DECORATING _____					
CAPACITY TO FILL LEVEL AFTER DECORATING _____					
OVERFLOW CAPACITY BEFORE DECORATING _____					
OVERFLOW CAPACITY AFTER DECORATING _____					
<p>Custom Bottle Inc. 10 Great Hill Road P.O. Box 720 Naugatuck, Connecticut 06770 203-723-6681</p>					
DRAWN BY: 001		DESC.: 2oz. BOSTON ROUND			
SCALE: 1-1		DATE: 5/9/96		DRAWING NO.: 107-3068-PA	
BOTTLE MAT'L: PVC/PETG		C.B.I.D.: #195			
CAD NAME: P0\					

