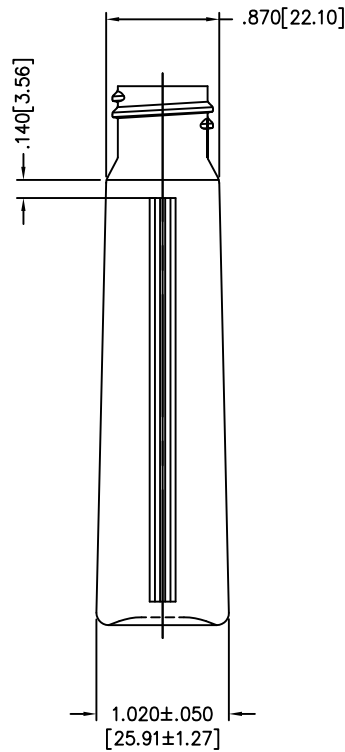
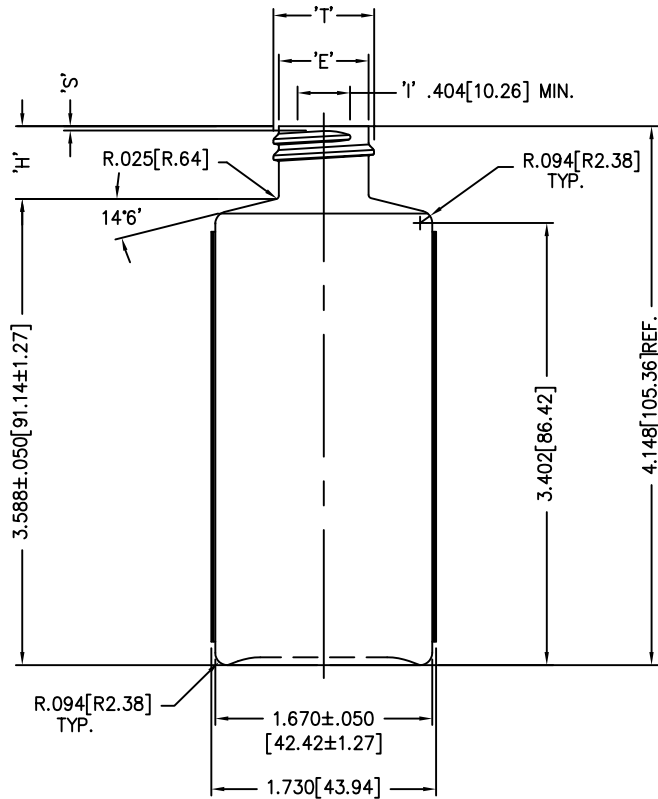
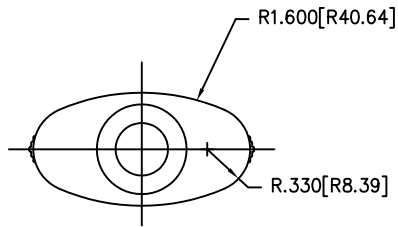


DISCLAIMER: CUSTOM BOTTLE INC.
 ASSUMES NO RESPONSIBILITY FOR:
 -FORM, FIT AND FUNCTION OF CLOSURES
 -SHELF LIFE AND/OR COMPATIBILITY OF
 INTENDED CONTENTS WITH THIS BOTTLE.

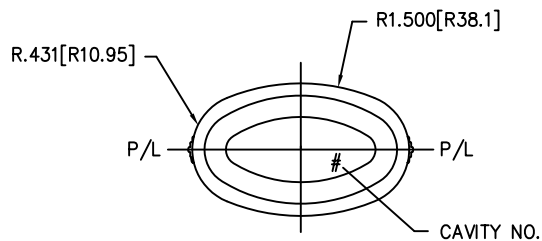
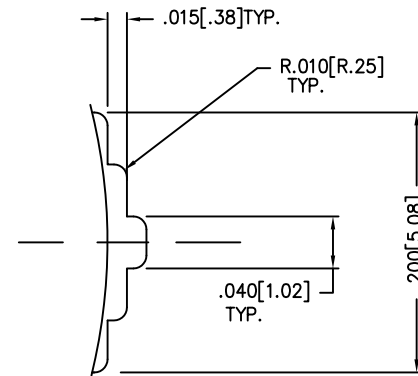
'T' AND 'E' DIMENSIONS ARE THE
 AVERAGE OF TWO MEASUREMENTS
 TAKEN 90° APART.
 THE LIMITS OF QUALITY WILL BE
 DETERMINED PER APPLICATION AS
 NECESSARY.

DIMENSIONS IN [] ARE
 IN MILLIMETERS
 ALL OTHERS INDICATED
 ARE IN INCHES
 This drawing subject to
 standard industry tolerances
 S.P.I.

CUSTOM BOTTLE
 APPROVAL:
 APPROVED BY **BP**
 DATE **APR. 29/10**
 CUSTOMER
 APPROVAL:
 APPROVED BY
 DATE



RIB DETAIL
 SCALE: 10-1



NO.	REV.	BY	DESCRIPTION	DATE	
NECK FINISH: M20 SP410			GRAM WT. 12 ±1.5		
'T'	'E'	'H'	'S'	'L'	'I'
.775 ±.008	.691 ±.008	.560 ±.015	.037 ±.015		
19.69±.20	17.55±.20	14.22±.38	.94±.38		
HELIX <: 3' 7'		T.P.I.: 8	CUTT. DIA.: .375[9.53]		
OVERFLOW CAPACITY BEFORE DECORATING				66.5ml ±2.0	



Custom Bottle Inc.
 10 Great Hill Road
 P.O. Box 720
 Naugatuck, Connecticut 06770
 203-723-6661

DRAWN BY: DS	DESC.: 2oz. PVC RIBBED OVAL
SCALE: 1-1 DATE: 21/8/97	DRAWING NO.: 107-5356-STOCK
BOTTLE MAT'L: PVC	MOULD NO.:
C.B.I.D.: #209	