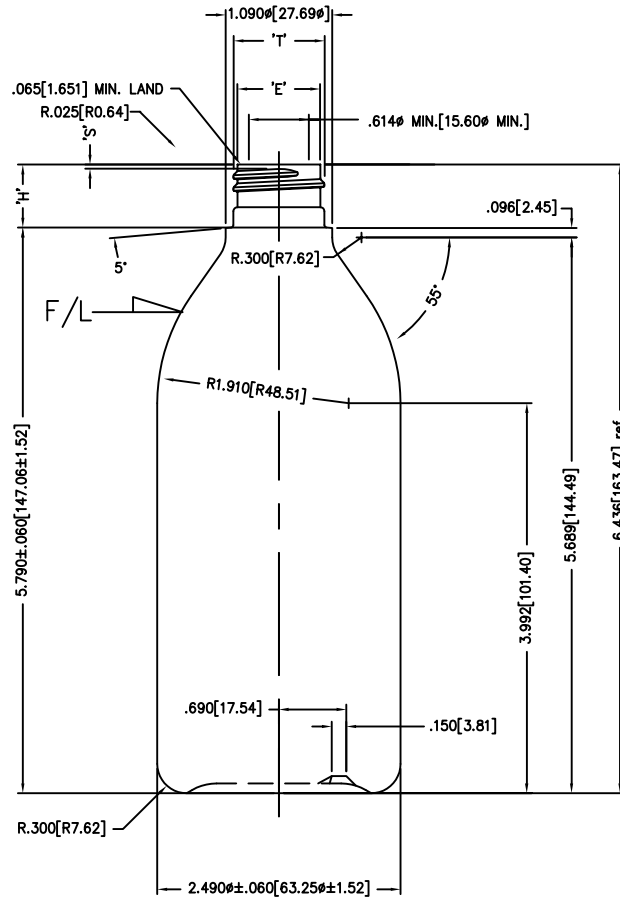
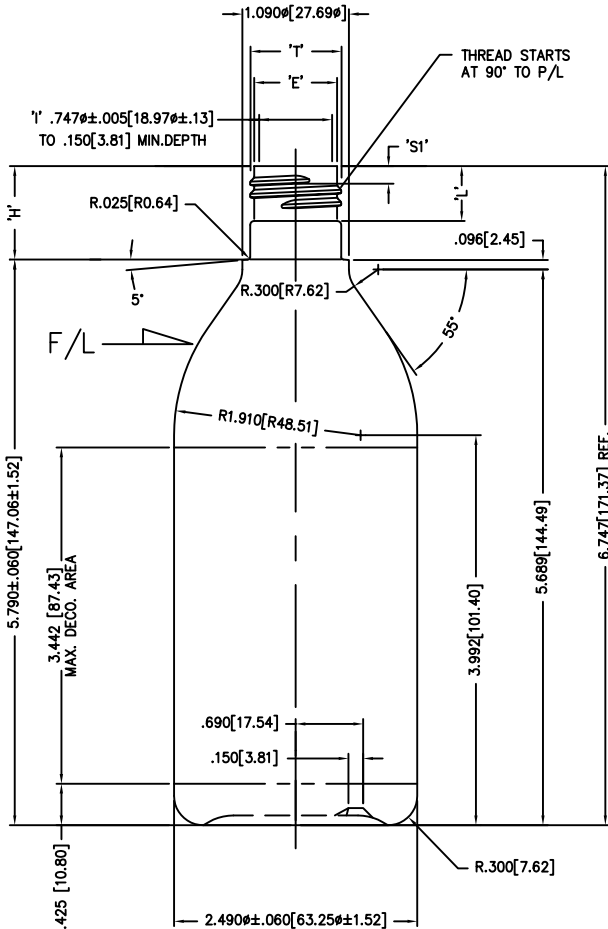


DISCLAIMER: CUSTOM BOTTLE INC.
ASSUMES NO RESPONSIBILITY FOR:
-FORM, FIT AND FUNCTION OF CLOSURES
-SHELF LIFE AND/OR COMPATIBILITY OF
INTENDED CONTENTS WITH THIS BOTTLE.

'T' AND 'E' DIMENSIONS ARE THE
AVERAGE OF TWO MEASUREMENTS
TAKEN 90° APART.
THE LIMITS OF QUALITY WILL BE
DETERMINED PER APPLICATION AS
NECESSARY.

DIMENSIONS IN [] ARE
IN MILLIMETERS
ALL OTHERS INDICATED
ARE IN INCHES
This drawing subject to
standard industry tolerances
S.P.I.

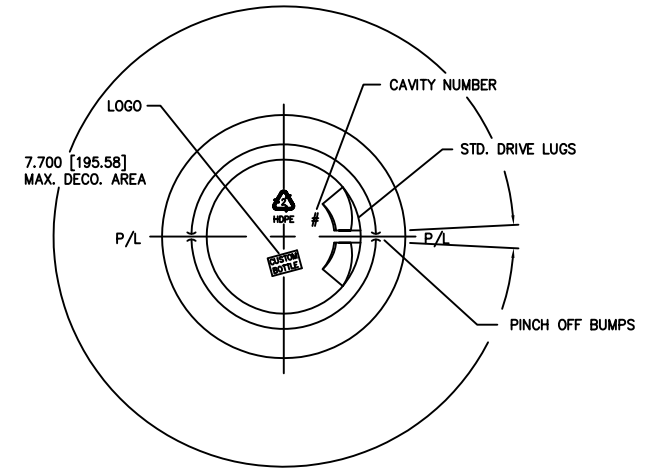
CUSTOM BOTTLE
APPROVAL:
APPROVED BY **BP**
DATE **NOV. 23/10**
CUSTOMER
APPROVAL:
APPROVED BY
DATE



ALTERNATE NECK
M24 SP410

'T': .932 ± .008 [23.67 ± .20]
'E': .848 ± .008 [21.54 ± .20]
'H': .646 ± .015 [16.41 ± .38]
'S': .046 ± .015 [1.17 ± .38]
'L': .437 MIN. [11.10 MIN.]

HELIX : 2' 34"
T.P.I.: 8
CUTT. DIA.: .375 [9.53]
O/F/C.: 377ml ± 9



NO.	REV.	BY	DESCRIPTION	DATE	
NECK FINISH: M24-SP415 (SPECIAL 'S')			GRAM WT. 32±2		
'T'	'E'	'H'	'S'	'L'	'I'
.932 ± .008	.848 ± .008	.605 ± .015	.180 ± .015	.561 MIN.	_____
23.67 ± 0.20	21.54 ± 0.20	15.37 ± 0.38	4.57 ± 0.38	14.25 MIN.	_____
HELIX <: 2' 34"		T.P.I.: 8	CUTT. DIA.: .375		
OVERFLOW CAPACITY BEFORE DECORATING				379ml ± 9	
			Custom Bottle Inc. 10 Great Hill Road P.O. Box 720 Naugatuck, Connecticut 06770 203-723-6661		
			DRAWN BY: 1130		
SCALE: 1-1		DATE: OCT 2/97		DRAWING NO.: 107-3386-STOCK	
BOTTLE MAT'L: HDPE			MOULD NO.:		
C.B.I.D.: #213					