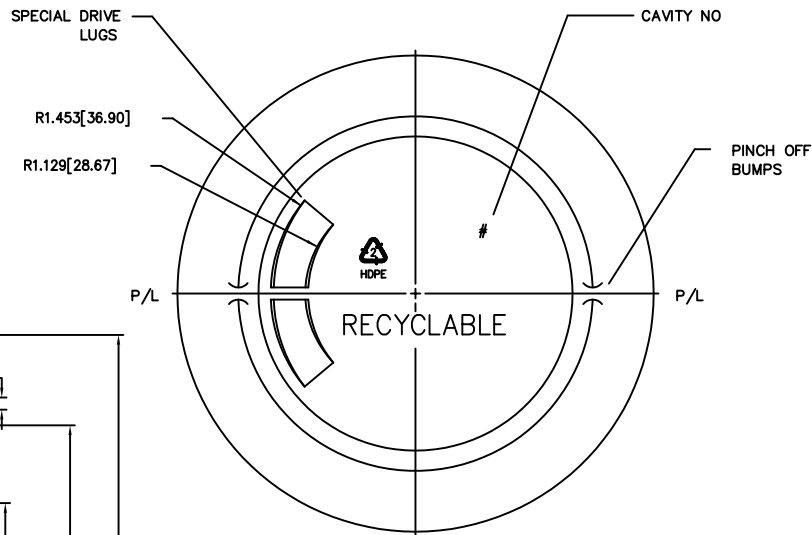
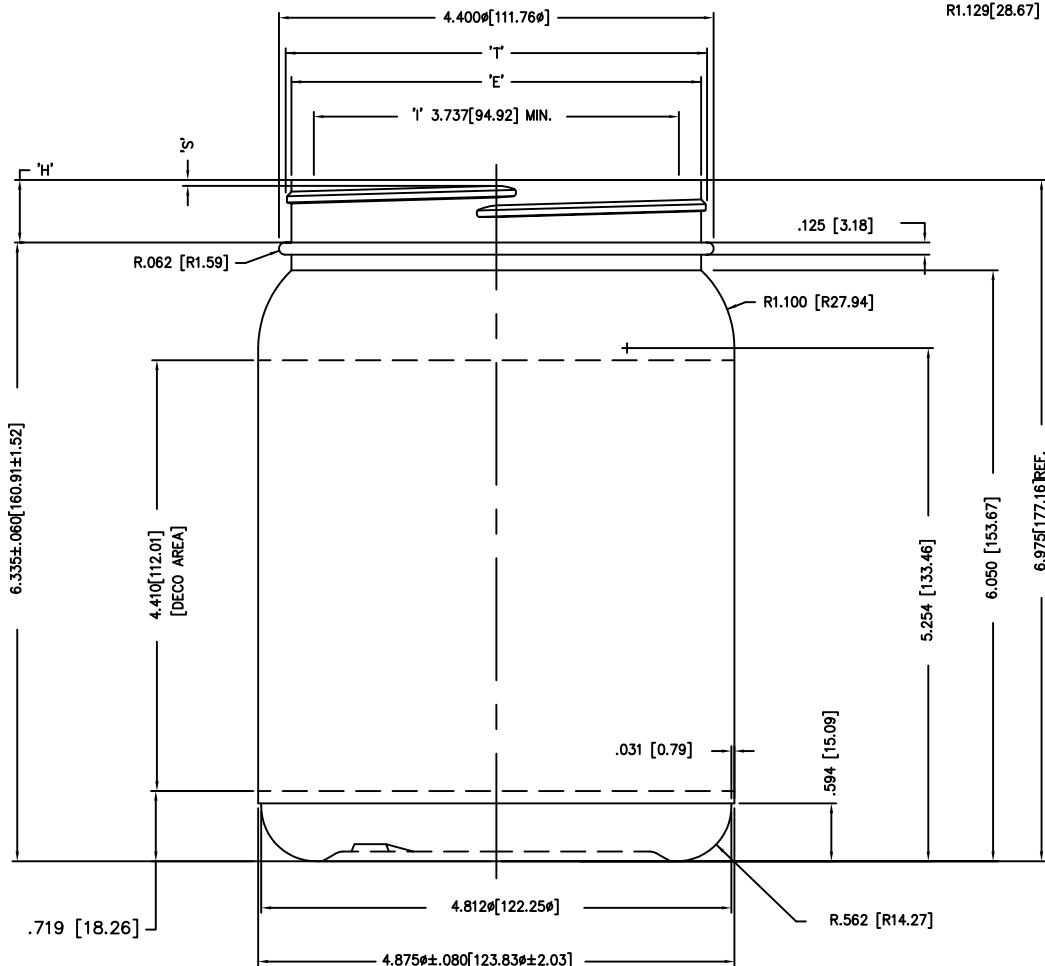


DISCLAIMER: CUSTOM BOTTLE INC.
ASSUMES NO RESPONSIBILITY FOR:
-FORM, FIT AND FUCTION OF CLOSURES
-SHELF LIFE AND/OR COMPATIBILITY OF
INTENDED CONTENTS WITH THIS BOTTLE.

'T' AND 'E' DIMENSIONS ARE THE
AVERAGE OF TWO MEASUREMENTS
TAKEN 90° APART.
THE LIMITS OF OVALITY WILL BE
DETERMINED PER APPLICATION AS
NECESSARY.

DIMENSIONS IN [] ARE
IN MILLIMETERS
ALL OTHERS INDICATED
ARE IN INCHES
This drawing subject to
standard industry tolerances
S.P.I.

CUSTOM BOTTLE
APPROVAL:
APPROVED BY **BP**
DATE **APR. 29/10**
CUSTOMER
APPROVAL:
APPROVED BY
DATE



SCREEN PRINTING INFO:
MAX. WIDTH: 4.410"
MAX. WIDTH: 14.750" (ALLOWS FOR .312" BREAK IN COPY)

NO.	REV.	BY	DESCRIPTION			DATE
NECK FINISH: M110-SP400			GRAM WT. 65 ±3			
'T'	'E'	'H'	'S'	'L'	'I'	
4.314 ±.018	4.194 ±.018	.640 ±.015	.060 ±.015			
109.58±.46	106.52±.46	16.26±.38	1.52±.38			
HELIX <: 0° 51'		T.P.I.: 5	CUTT. DIA.: .500			
OVERFLOW CAPACITY BEFORE DECORATING			1930±24			
CUSTOM BOTTLE			Custom Bottle Inc. 10 Great Hill Road P.O. Box 720 Naugatuck, Connecticut 06770 203-723-6661			
DRAWN BY: ds		DESC.: 3 PINT JAR				
SCALE: 1-1	DATE: JUNE13/03		DRAWING NO.: 107-5656-STOCK			
BOTTLE MAT'L: HDPE		MOULD NO.:				
C.B.I.D.: #88						