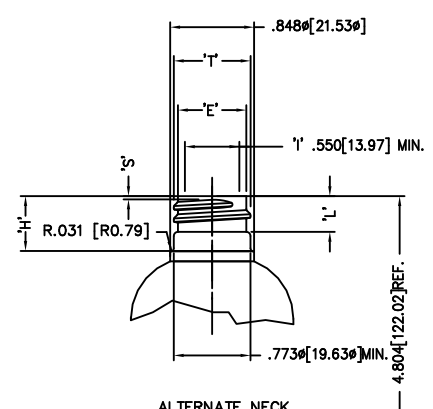


ALTERNATE NECK

M24 SP415

'T': .932±.008 [23.67±.20]  
 'E': .848±.008 [21.54±.20]  
 'H': .957±.015 [24.31±.38]  
 'S': .037±.015 [ .94±.38]  
 'L': .561 [14.25] MIN.  
 'W': .084 [2.13] MIN.

HELIX < : 2°34'  
 T.P.I.: 8  
 CUTT DIA.: .375 [9.52]  
 GM. WT.: 15±1.0  
 O/F/C.: 131ml±5

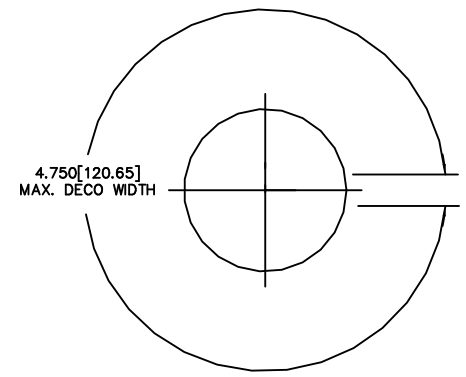
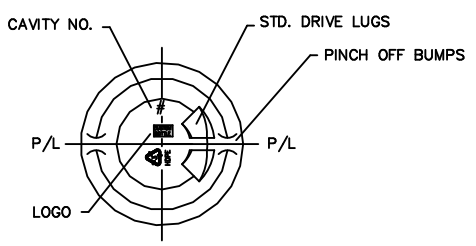


ALTERNATE NECK

M20 SP410

'T': .775±.008 [19.68±.20]  
 'E': .691±.008 [17.55±.20]  
 'H': .554±.015 [ 7.79±.38]  
 'S': .037±.015 [ .94±.38]  
 'L': .361 [9.17] MIN.

HELIX < : 2°34'  
 T.P.I.: 8  
 CUTT DIA.: .375 [9.52]  
 GM. WT.: 11±1.5  
 O/F/C.: 135ml±5



CUSTOM BOTTLE APPROVAL:  
 NECK FINISH .....  
 WEIGHT .....  
 CAPACITY .....  
 MATERIAL .....  
 SPECIAL REQUESTS .....  
 CUSTOMER APPROVAL:  
 APPROVED BY .....  
 DATE .....

NOTE: MIN. WALL THICKNESS .012"

(B)	CDL	REMOVED ALT. NECK M24-SP415 (SPECIAL 'H')			JULY 3/08
(A)	CDL	MAX. LABEL HT. WAS 2.957			JULY.8/04
NO.	REV.	BY	DESCRIPTION		DATE
NECK FINISH:		M24 SP410	GRAM WT.	14±1	
'T'	'E'	'H'	'S'	'L'	'I'
.932 ±.008	.848 ±.008	.646 ±.015	.046 ±.015	.437 MIN.	
23.67 ±0.20	21.54 ±0.20	16.41 ±0.38	1.17 ±0.38	11.10 MIN.	
HELIX <:		2° 34'	T.P.I.:	8	CUTT. DIA.:
					.375 [9.53]
CAPACITY TO FILL LEVEL BEFORE DECORATING				118ml±5	
CAPACITY TO FILL LEVEL AFTER DECORATING					
OVERFLOW CAPACITY BEFORE DECORATING				129ml±5	
OVERFLOW CAPACITY AFTER DECORATING					
		Custom Bottle Inc. 10 Great Hill Road P.O. Box 720 Naugatuck, Connecticut 06770 203-723-6681			
		DRAWN BY: ds		DESC.: 4oz COSMO	
SCALE: 1-1		DATE: FEB.11/04		DRAWING NO.: 107-6027-PB	
BOTTLE MAT'L: HDPE		CAD NAME: PD\6XXX\107-6027		C.B.I.D.: #273	

This drawing subject to standard industry tolerances S.P.I.