

GRAM WT.	O/F/C
96 ±4	3277ml ±38
110 ±4	3262ml ±38

DISCLAIMER: CUSTOM BOTTLE INC.
ASSUMES NO RESPONSIBILITY FOR:
-FORM, FIT AND FUNCTION OF CLOSURES
-SHELF LIFE AND/OR COMPATIBILITY OF
INTENDED CONTENTS WITH THIS BOTTLE.

'T' AND 'E' DIMENSIONS ARE THE
AVERAGE OF TWO MEASUREMENTS
TAKEN 90° APART.

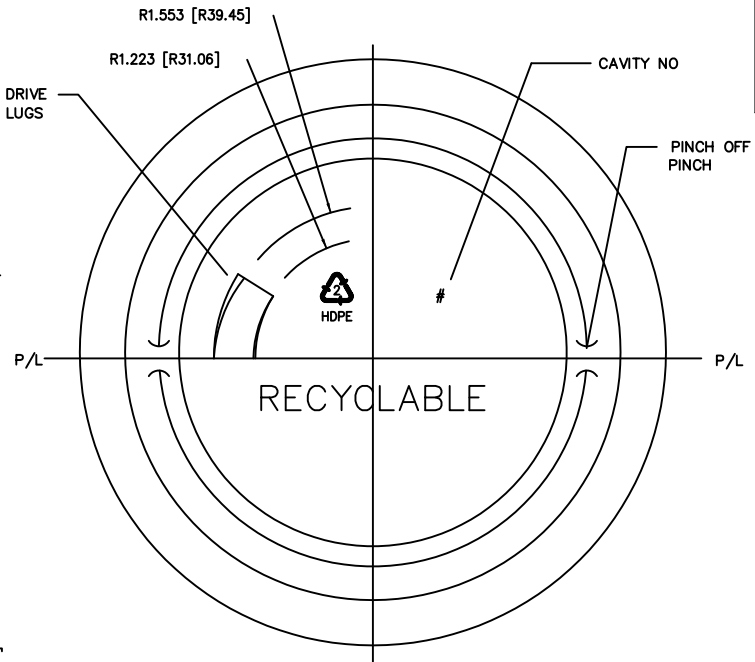
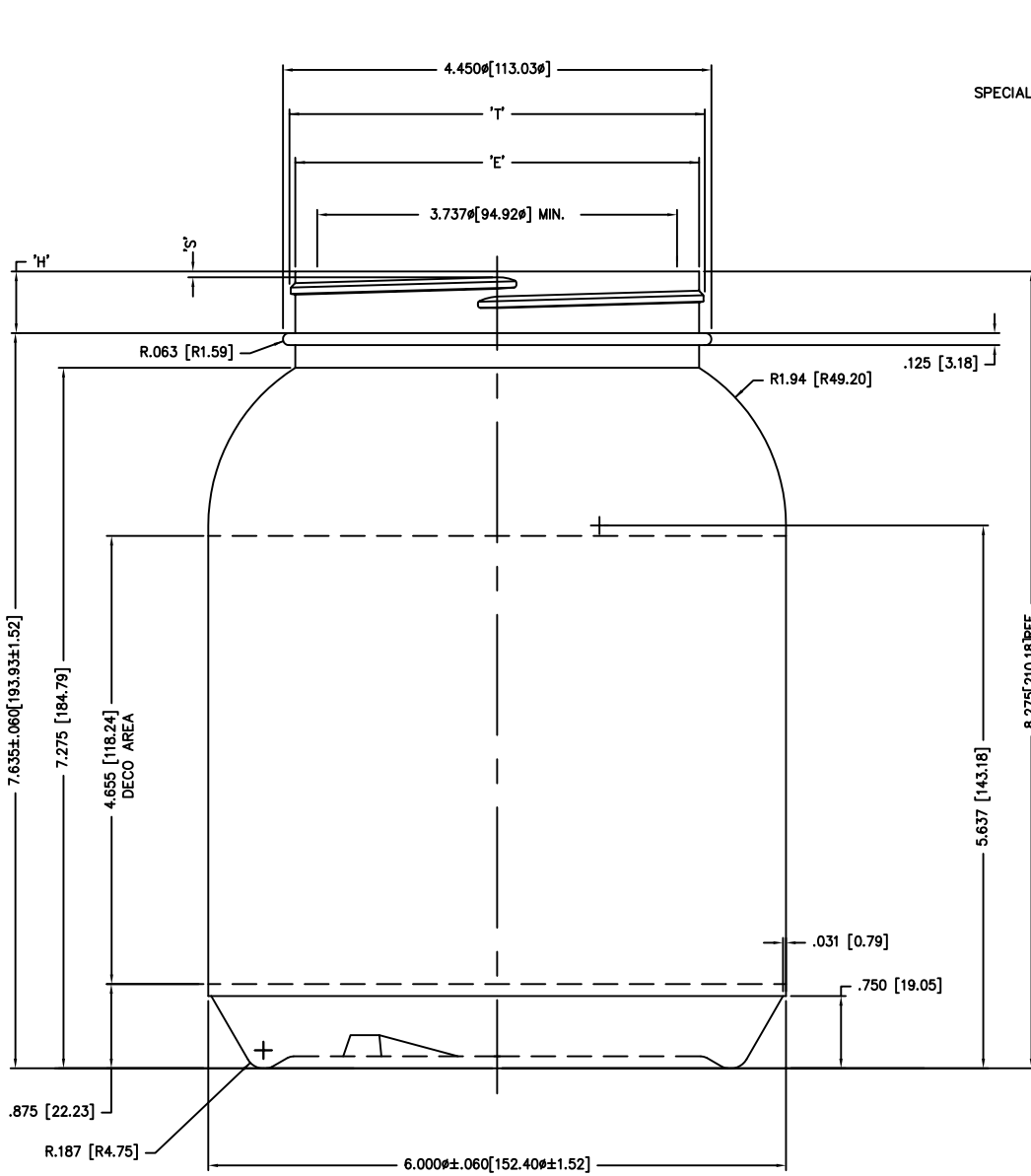
THE LIMITS OF QUALITY WILL BE
DETERMINED PER APPLICATION AS
NECESSARY.

DIMENSIONS IN [] ARE
IN MILLIMETERS
ALL OTHERS INDICATED
ARE IN INCHES

This drawing subject to
standard industry tolerances
S.P.I.

CUSTOM BOTTLE
APPROVAL:
APPROVED BY **BP**
DATE **APR. 29/10**

CUSTOMER
APPROVAL:
APPROVED BY
DATE



NO.	REV.	BY	DESCRIPTION			DATE
NECK FINISH: M110-SP400			GRAM WT.		SEE CHART	
'T'	'E'	'H'	'S'	'L'	'I'	
4.314 ±.018	4.194 ±.018	.648 ±.015	.060 ±.015	_____	_____	
109.58 ±.46	106.52 ±.46	16.46 ±.38	1.52 ±.38	_____	_____	
HELIX <: 0° 51'		T.P.I.: 5	CUTT. DIA.: .500			
OVERFLOW CAPACITY BEFORE DECORATING			SEE CHART			
CUSTOM BOTTLE		Custom Bottle Inc. 10 Great Hill Road P.O. Box 720 Naugatuck, Connecticut 06770 203-723-6661				
DRAWN BY: ds		DESC.: 6 PINT JAR				
SCALE: 1-1	DATE: JUNE11/03		DRAWING NO.: 107-5648-STOCK			
BOTTLE MAT'L: HDPE		C.B.I.D.: #90				
		MOULD NO.:				