

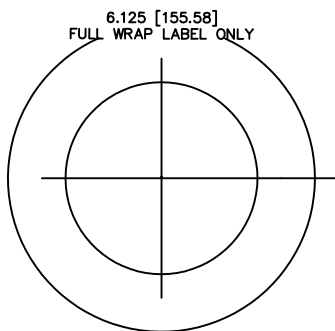
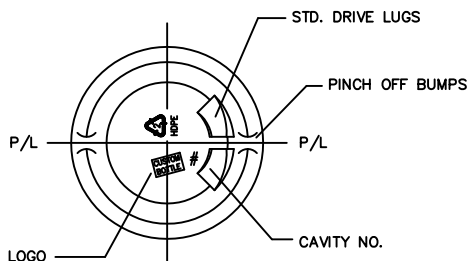
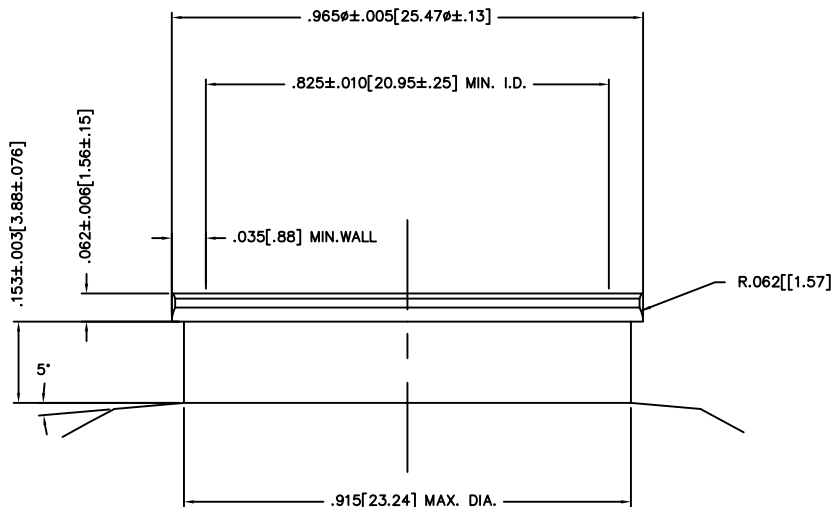
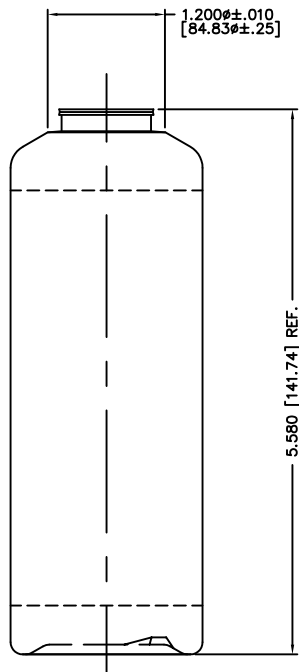
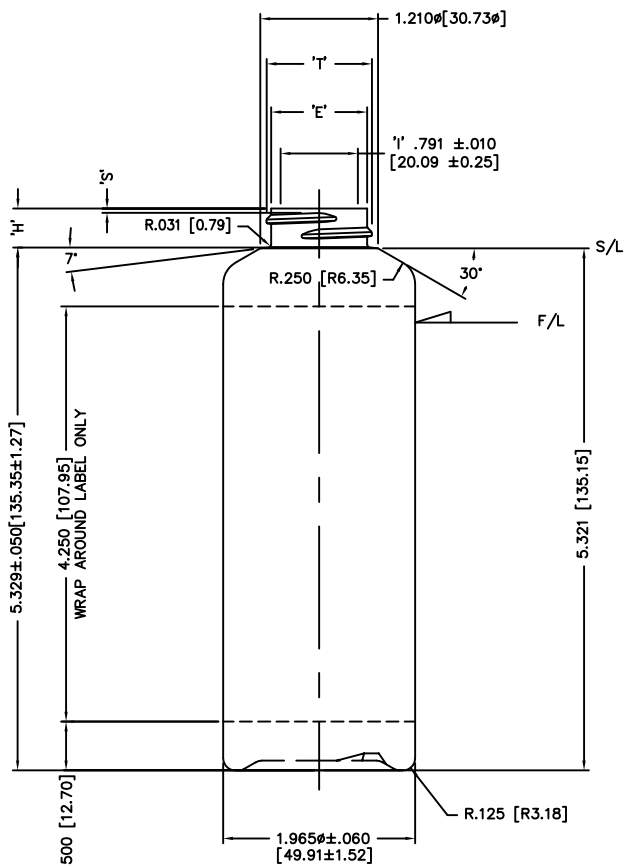
DISCLAIMER: CUSTOM BOTTLE INC.
ASSUMES NO RESPONSIBILITY FOR:
-FORM, FIT AND FUNCTION OF CLOSURES
-SHELF LIFE AND/OR COMPATIBILITY OF
INTENDED CONTENTS WITH THIS BOTTLE.


'T' AND 'E' DIMENSIONS ARE THE
AVERAGE OF TWO MEASUREMENTS
TAKEN 90° APART.
THE LIMITS OF QUALITY WILL BE
DETERMINED PER APPLICATION AS
NECESSARY.

DIMENSIONS IN [] ARE
IN MILLIMETERS
ALL OTHERS INDICATED
ARE IN INCHES
This drawing subject to
standard industry tolerances
S.P.I.

CUSTOM BOTTLE
APPROVAL:
APPROVED BY **BP**
DATE **APR. 29/10**
CUSTOMER
APPROVAL:
APPROVED BY
DATE

28mm CRIMP NECK



NO.	REV.	BY	DESCRIPTION	DATE		
NECK FINISH:			M28 SP400	GRAM WT. 21.5 ±1.5		
'T'	'E'	'H'	'S'	'L'	'I'	
1.078 ±.010	.984 ±.010	.400 ±.015	.046 ±.015	_____	.791 ±.010	
27.38 ±0.25	24.99 ±0.25	10.16 ±0.38	1.17 ±0.38	_____	20.09 ±0.25	
HELIX <:		2° 57'	T.P.I.:	6	CUTT. DIA.:	.500 [12.70]
OVERFLOW CAPACITY BEFORE DECORATING					247.5ml ±7	
			Custom Bottle Inc. 10 Great Hill Road P.O. Box 720 Naugatuck, Connecticut 06770 203-723-6661			
			DRAWN BY: 1130			DESC.: 7oz. ROUND SHOULDER
SCALE: 1-1		DATE: MAY 1/09		DRAWING NO.:		
BOTTLE MAT'L: HDPE		1		107-8543-STOCK		
C.B.I.D.:		#80		MOULD NO.:		