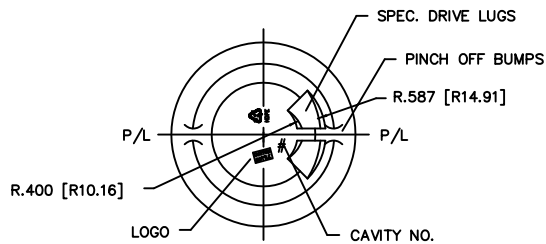
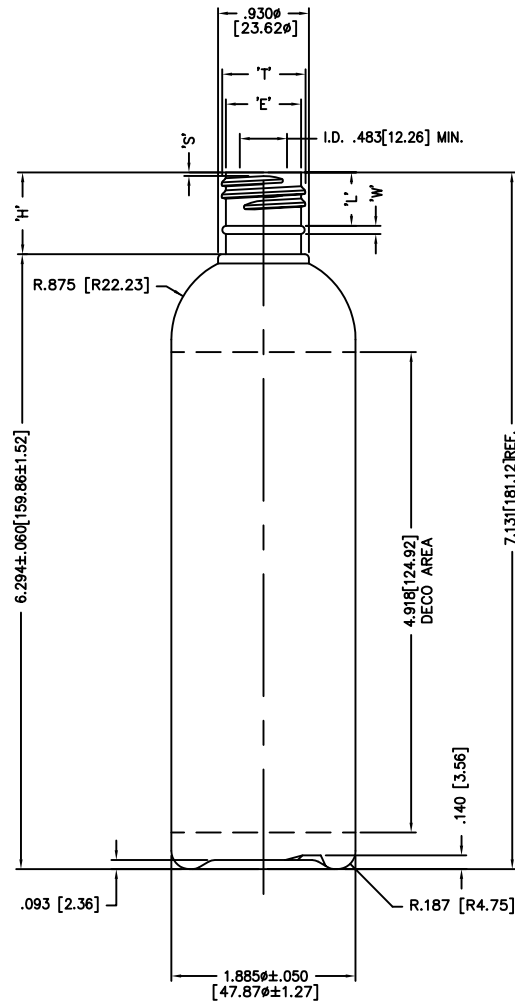


DISCLAIMER: CUSTOM BOTTLE INC.  
ASSUMES NO RESPONSIBILITY FOR:  
-FORM, FIT AND FUNCTION OF CLOSURES  
-SHELF LIFE AND/OR COMPATIBILITY OF  
INTENDED CONTENTS WITH THIS BOTTLE.

'T' AND 'E' DIMENSIONS ARE THE  
AVERAGE OF TWO MEASUREMENTS  
TAKEN 90° APART.  
  
THE LIMITS OF QUALITY WILL BE  
DETERMINED PER APPLICATION AS  
NECESSARY.

DIMENSIONS IN [ ] ARE  
IN MILLIMETERS  
ALL OTHERS INDICATED  
ARE IN INCHES  
  
This drawing subject to  
standard industry tolerances  
S.P.I.

CUSTOM BOTTLE  
APPROVAL:  
APPROVED BY **BP**  
DATE **NOV. 23/10**  
  
CUSTOMER  
APPROVAL:  
APPROVED BY .....  
DATE .....



SCREEN PRINTING:  
MAX. HT.: 4.918 [124.92]  
MAX. WIDTH.: 5.358 [136.00] (ALLOWING 5/16 BREAK IN COPY)

NO.	REV.	BY	DESCRIPTION	DATE	
NECK FINISH: M22-SP415			GRAM WT. 23 ± 2.0		
'T'	'E'	'H'	'S'	'L'	'I'
.854 ± .008	.770 ± .008	.837 ± .015	.037 ± .015	.546 MIN	_____
21.69 ± 0.20	19.56 ± 0.20	21.26 ± 0.38	0.94 ± 0.38	13.87 MIN.	_____
HELIX <: 2' 49'		T.P.I.: 8	CUTT. DIA.: .375 [9.53]		
OVERFLOW CAPACITY BEFORE DECORATING				257ml ± 7	
			Custom Bottle Inc. 10 Great Hill Road P.O. Box 720 Naugatuck, Connecticut 06770 203-723-6661		
			DRAWN BY: 1130		
SCALE: 1-1		DATE: DEC.29/03		DRAWING NO.: 107-5944-STOCK	
BOTTLE MAT'L: HDPE			1		
C.B.I.D.: #105			MOULD NO.:		